

Limitorque[®]
Accutronix MX
Performance and Dimensions
for MX Series 05 through 140 Electric Actuators

Limitorque MX Actuators

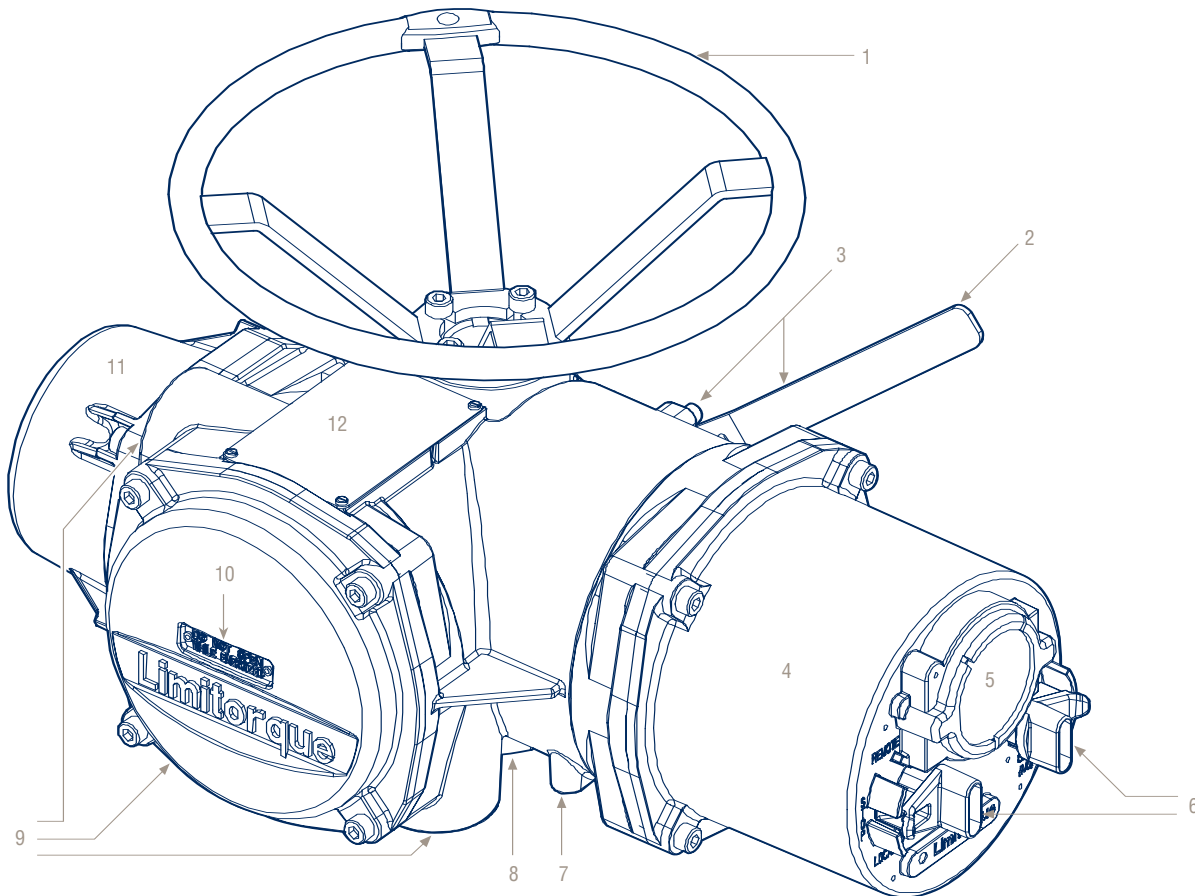
... have been engineered to accommodate today's wide variety of valve designs and to meet international standards for valve and actuator interfaces.

MX Series 05 through 140 electric actuators can be used in applications requiring up to 1,700 ft-lb (2,307 N m) of torque and up to 75,000 lb. (333 kN) of thrust.

Standard and extended torque and thrust bases are available for all unit sizes and a side-mounted hand-wheel option is offered for the MX-10 through 140.

Dimensions for all sizes of MX actuators, base options, and stem nuts are included in this document. Contact your local Limitorque distributor or Limitorque sales office for further information.

Typical MX-05 Unit



Item	Description	Item	Description
1	Handwheel	7	Ground Lugs
2	Declutch Lever	8	Thrust/Torque Base
3	Oil Fills	9	Conduit Entries
4	Control Cover	10	Terminal Compartment (Installation Kit)
5	Control Panel Display	11	Motor
6	Control Knob	12	Nameplate

MX Series Performance Ratings for Units 05 through 140

MX-05 through MX-40 (Three-phase-50 Hz/380, 400, and 415 Volt-60 Hz/230, 380, 460, 575 Volt)

MX-85 through MX-140 (Three-phase-50 Hz/380¹, 400, and 415 Volt-60 Hz/380, 460, 575 Volt)

Output Speed (RPM)		MX-05		MX-10		MX-20		MX-40		MX-85		MX-140	
		Rated Output Torque											
60 Hz	50 Hz	ft-lb	N m	ft-lb	N m	ft-lb	N m	ft-lb	N m	ft-lb	N m	ft-lb	N m
18	15	55	75	125	170	225	305	440	597	N/A	N/A	N/A	N/A
26	22	55	75	125	170	225	305	440	597	850	1153	1500	2036
40	33	55	75	125	170	225	305	440	597	1225	1662	1700	2307
52	43	55	75	125	170	225	305	440	597	1150	1561	1600	2171
77	65	48	65	107	145	178	241	345	468	850	1153	1200	1628
100	131 ²	84	110 ²	39	53	89	121	148	201	286	388	600	814
155	170 ²	127	143 ²	41	56	89	121	140	190	260	353	450	611
200	165	34	46	73	99	114	155	210	285	N/A	N/A	N/A	N/A

Note 1: 380/50 multiply by 0.9; 380/60 consult factory

Note 2: MX-85 and MX-140

	lb.	kN	lb.	kN	lb.	kN	lb.	kN	lb.	kN	lb.	kN
Thrust Ratings (lbs/kN)	8000	35	15000	66	25000	111	36000	160	50000	222	75000	333
	lb.	kg	lb.	kg	lb.	kg	lb.	kg	lb.	kg	lb.	kg
Weight (lbs/kg)	52	24	65	29	109	49	133	60	250	114	300	136

Maximum Stem Capacity

Type A Couplings	in.	mm	in.	mm	in.	mm	in.	mm	in.	mm	in.	mm
Type A1	1.26	32	1.57	40	2.36	60	2.64	67	3.50	88	3.50	88
Type A1E (Extended Nut)	1.26	32	1.57	40	2.36	60	2.64	67	3.50	88	3.50	88
Type B Couplings (Torque Only) ³												
Type B4	1	25.4	1.25	30	1.94	50	2.2	55	2.88	73	2.88	73
Type B4E (Extended)	0.75	19	0.91	22	1.56	41	1.78	46	2.25	56	2.25	56
Type B1 (Fixed Bore) ⁴	N/A	42	N/A	42	N/A	60	N/A	60	N/A	N/A	N/A	N/A
Type BL (Splined)	6 & 38 Splines		6 & 38 Splines		6 & 36 Splines		6 Splines		N/A		N/A	
Maximum Bore and Keyway												
Maximum Bore (B4)1	25	1.25	30	1.94	50	2.2	55	2.88	73	2.88	73	
Key	¼ sq.	8 x 7	¼ sq.	10 x 8	½ x ¾	14 x 9	½ x ¾	16 x 10	¾ x ½	20 x 12	¾ x ½	20 x 12
Maximum Bore (B4E)	.75	18	0.91	22	1.56	41	1.78	46	2.25	56	2.25	56
Key	⅜ sq.	6 x 6	¼ sq.	8 x 7	⅝ sq.	12 x 8	½ x ¾	14 x 9	½ x ¾	16 x 10	½ x ¾	16 x 10

Note 3: Maximum bores for type B couplings may require rectangular keys.

Note 4: Available in ISO base only.

	MX-05	MX-10	MX-20	MX-40	MX-85	MX-140
Mounting Base (MSS SP-102/ISO 5210)	FA10/F10	FA10/F10	FA14/F14	FA14/F14	FA16/F16	FA25/F25
Handwheel Ratio (STD/Optional)	Direct	Direct/8:1	Direct/12:1	Direct/24:1	16/48	16/48
Side-mounted Handwheel Efficiencies	N/A	52%	54%	51%	53%/51% ⁵	53%/51% ⁵

Note 5: Efficiencies for MX-85 and 140 are 51% with SGA and 53% without SGA.

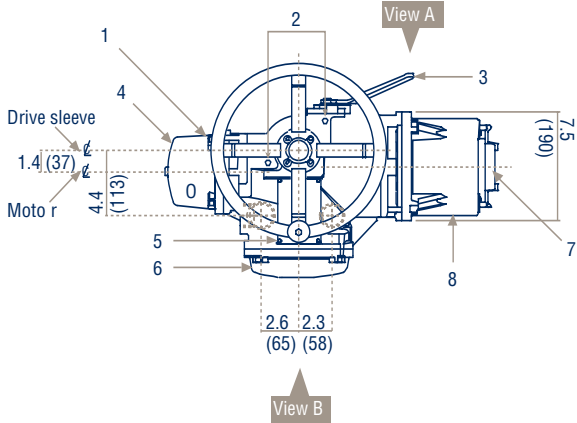
MX Handwheel Rimpull

Unit/ Mounting	Handwheel Diameter (in.)	Gear Ratio	Rated Torque ft-lb	Efficiency	Rimpull at Rated Torque (lb.)	Output Torque (ft-lb) at 20 lb. Rimpull	Output Torque (ft-lb) at 40 lb. Rimpull	Output Torque (ft-lb) at 60 lb. Rimpull	Output Torque (ft-lb) at 80 lb. Rimpull
MX-05 Top	12	1	55	0.88	125	9	18	26	35
MX-05 Top	18	1	55	0.88	83	13	26	40	53
MX-10 Top	18	1	125	0.88	189	13	26	40	53
MX-10 Side	12	8	125	0.52	60	42	83	125	166
MX-20 Top	24	1	225	0.88	256	18	35	53	70
MX-20 Side	12	12	225	0.54	69	65	130	194	259
MX-40 Top	24	1	440	0.88	500	18	35	53	70
MX-40 Side	12	24	440	0.51	72	122	245	367	490
MX-85/140 w/o SGA	18	16	600	0.53	88	127	254	382	508
MX-85/140 w/SGA	18	48	1574	0.51	86	367	734	1101	1469

MX Unit 05 Dimension Data

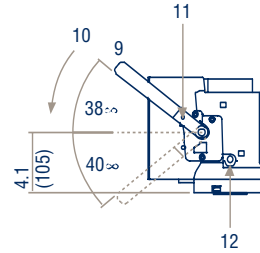
Dimensions in inches and millimeters.

Top View



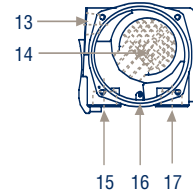
View A

Detail of declutch lever

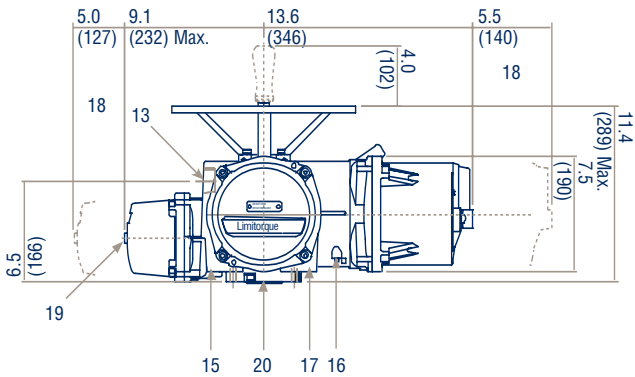


View B

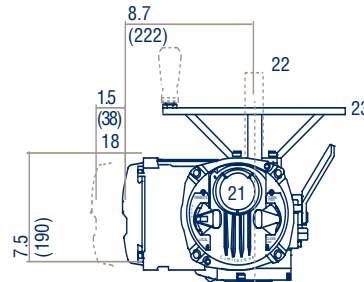
Conduit entries with covers removed



Side View



Front View



Dimension Key

- Preferred mounting is with motor horizontal or up
- Lubricant fill
- Declutch lever is padlockable in motor operation
- Motor
- Serial text plate
- Terminal compartment
- Control panel
- Controls compartment
- Lever returns automatically to this position when released
- To engage manual override
- Hole 0.28" (7) diameter for padlock
- Lubricant drain
- Conduit entry – Tapped 1.25" NPT; Options – M32, M25, M20, and PG21
- Customer terminals
- Conduit entry – Tapped 1.5" NPT; Options – M40, M32, M25, M20, PG21, and PG29
- Ground/earthing lug
- Conduit entry – Tapped 1.25" NPT; Options – M32, M25, M20, and PG21
- Allowance for cover removal
- Hole 0.22" (5.5) diameter x 0.43" (11) deep for self-tapping screw
- Mounting face for attaching to valve flange or extended base
- Control panel display window
- Stem cover (when required) – length to suit valve travel. Threaded 1.25" NPT or fitted with pipe plug
- Standard handwheel 12" (305) diameter. Optional size available 18" (450) diameter

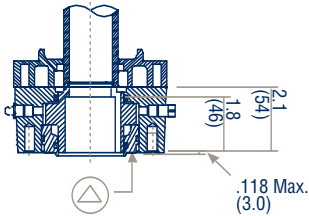
Note: Millimeter dimensions are in parentheses.

MX Unit 05 Base Details

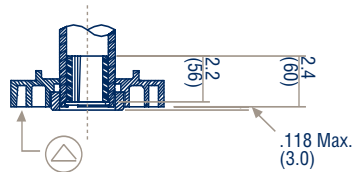
Dimensions in inches and millimeters.

Non-thrust (Torque Only) Bases

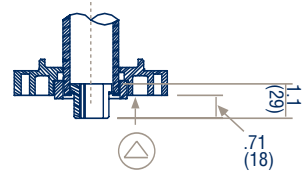
Type B1



Type B4

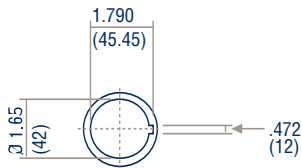


Type B4E (Extended Reach)

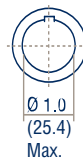


Stem Nut Bore Details

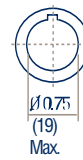
Type B1 (Fixed Bore and Key)



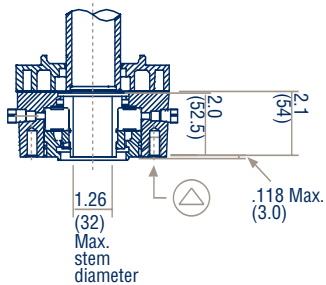
Type B4 (Variable Bore)



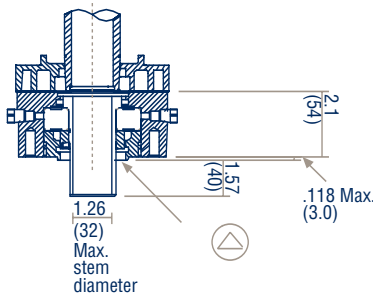
Type B4E (Variable Bore)



Type A1

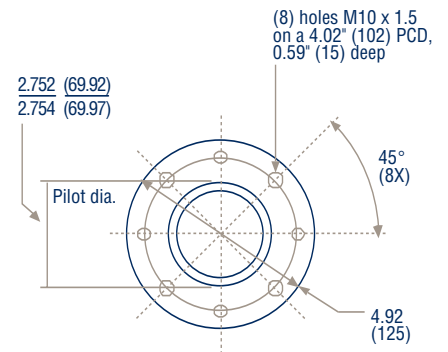


Type A1E (Extended Reach)



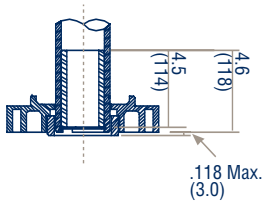
Base Details

F10

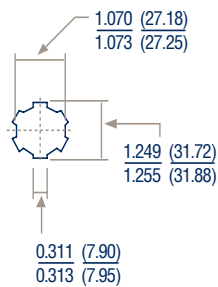


Splined Stem Nuts

Type BL



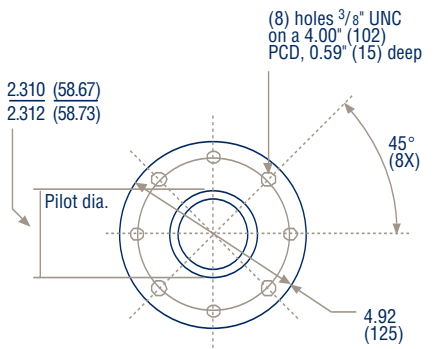
Type BL6 (6 Splines)



Type BL38 (38 Splines)

- Involute per ANSI B92.1
- Fillet root
- Side fit
- 30° PA
- 32/64 pitch

FA10

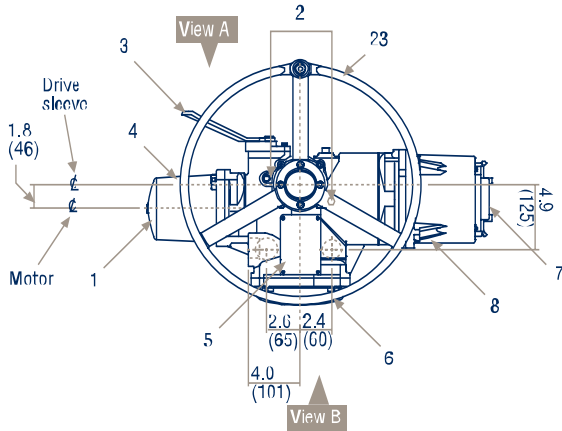


⊕ Note 1: Mounting face for attaching to valve flange.
 Note 2: Millimeter dimensions are in parentheses.

MX Unit 10 Dimension Data

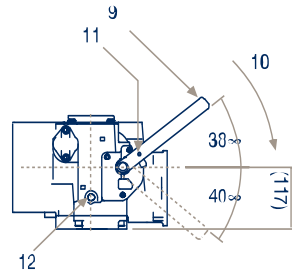
Dimensions in inches and millimeters.

Top View



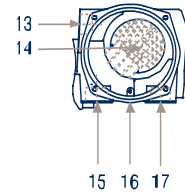
View A

Detail of declutch lever
Note: Handwheel removed for clarity

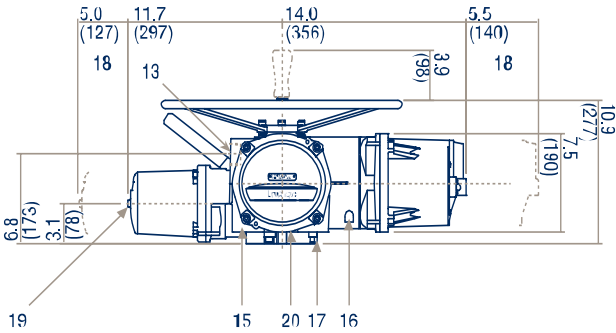


View B

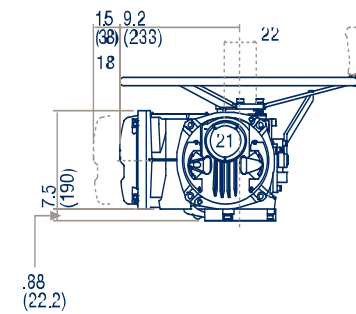
Conduit entries with covers removed



Side View



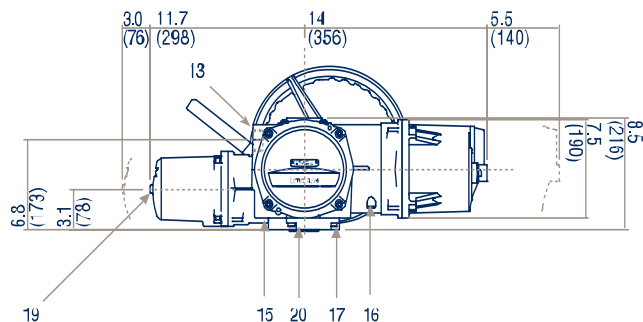
Front View



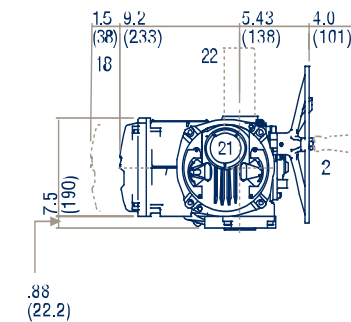
Dimension Key

- 1 Preferred mounting is with motor horizontal or up
- 2 Lubricant fill
- 3 Declutch lever is padlockable in motor operation
- 4 Motor
- 5 Serial text plate
- 6 Terminal compartment / Control panel
- 8 Controls compartment
- 9 Lever returns automatically to this position when released
- 10 To engage manual override
- 11 Hole 0.28" (7) diameter for padlock
- 12 Lubricant drain
- 13 Conduit entry – Tapped 1.25" NPT; Options M/32, M25, M20, and PG21
- 14 Customer terminals
- 15 Conduit entry – Tapped 1.5" NPT; Options – M40, M32, M25, M20, PG21, and PG29
- 16 Ground/earthing lug
- 17 Conduit entry – Tapped 1.25" NPT; Options M/32, M25, M20, and PG21
- 18 Allowance for cover removal
- 19 Hole 0.22" (5.5) diameter x 0.43" (11) deep for self-tapping screw
- 20 Mounting face for attaching to valve flange or extended bases
- 21 Control panel display window
- 22 Stem cover (when required) – length to suit valve travel. Threaded 2.00" NPT or fitted with pipe plug
- 23 Standard handwheel 18" (450) diameter. Side mounted handwheel 12" (305) diameter

Side-mounted Option: Side View



Side-mounted Option: Front View



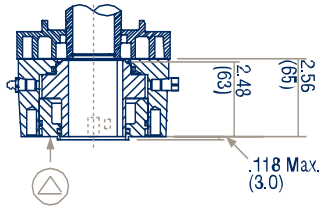
Note: Millimeter dimensions are in parentheses.

MX Unit 10 Base Details

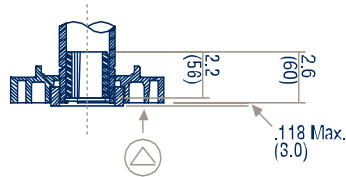
Dimensions in inches and millimeters.

Non-thrust (Torque Only) Bases

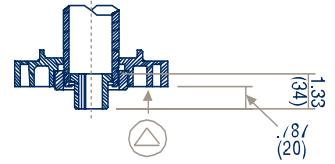
Type B1



Type B4

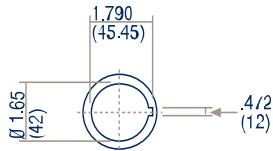


Type B4E (Extended Reach)

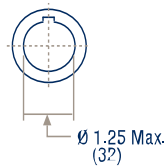


Stem Nut Bore Details

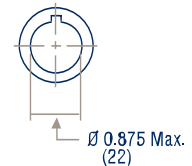
Type B1 (Fixed Bore and Key)



Type B4 (Variable Bore)

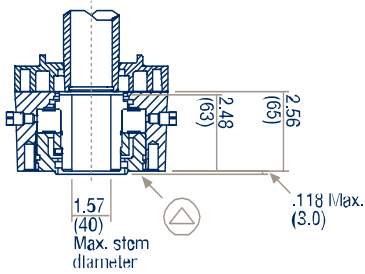


Type B4E (Variable Bore)

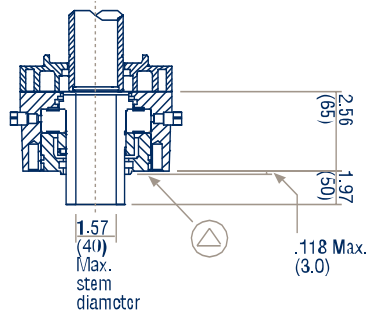


Thrust Bases

Type A1

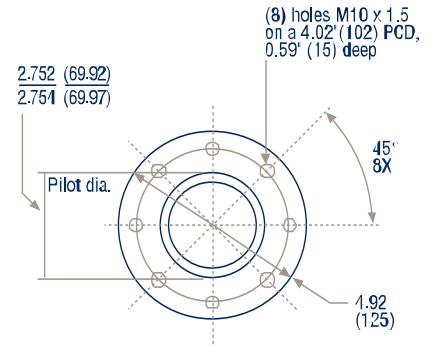


Type A1E (Extended Reach)



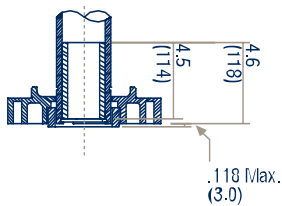
Base Details

F10

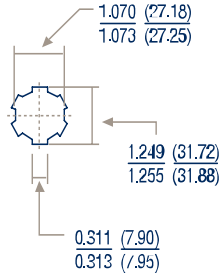


Splined Stem Nuts

Type BL

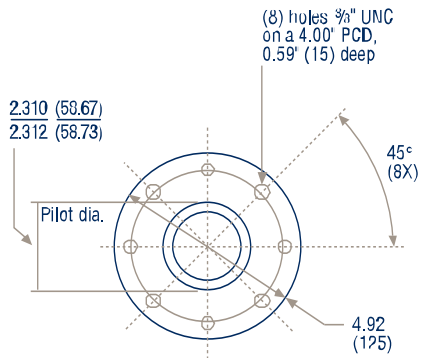


Type BL6 (6 Splines)



- Involute per ANSI B92.1
- Fillet root
- Side fit
- 30° PA
- 32/64 pitch

FA10

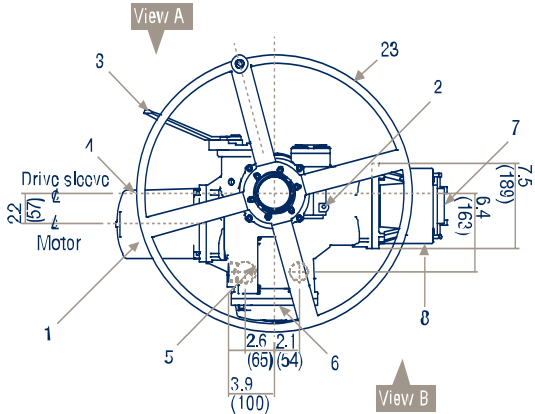


⊕ Note 1: Mounting face for attaching to valve flange.
 Note 2: Millimeter dimensions are in parentheses.

MX Unit 20 Dimension Data

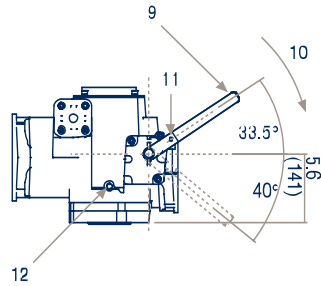
Dimensions in inches and millimeters.

Top View



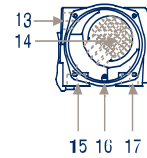
View A

Detail of declutch lever
Note: Handwheel removed for clarity.

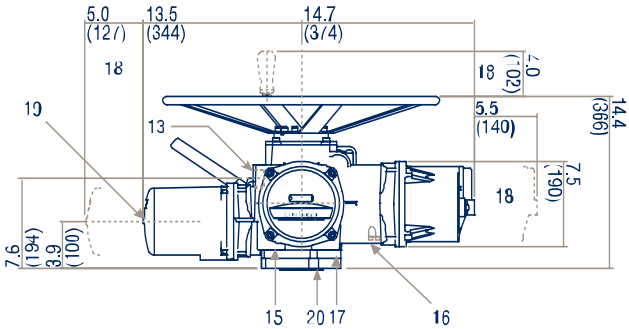


View B

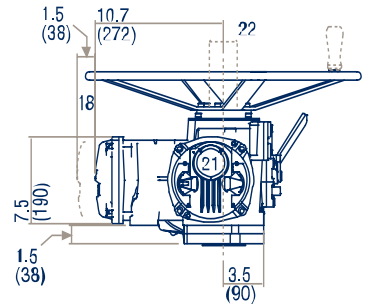
Conduit entries with covers removed



Side View



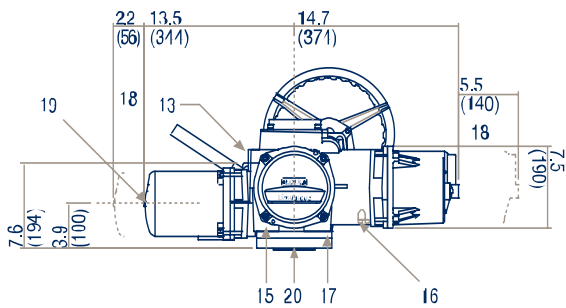
Front View



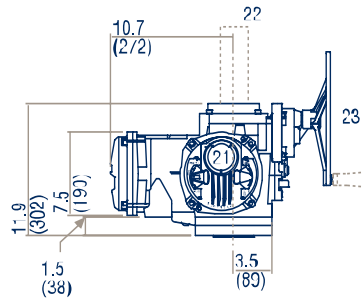
Dimension Key

- 1 Preferred mounting is with motor horizontal or up
- 2 Lubricant fill
- 3 Declutch lever is padlockable in motor operation
- 4 Motor
- 5 Serial text plate
- 6 Terminal compartment
- 7 Control panel
- 8 Controls compartment
- 9 Lever returns automatically to this position when released
- 10 To engage manual override
- 11 Hole 0.28" (7) diameter for padlock
- 12 Lubricant drain
- 13 Conduit entry – Tapped 1.25" NPT; Options – M32, M25, M20, and PG21
- 14 Customer terminals
- 15 Conduit entry – Tapped 1.5" NPT; Options – M40, M32, M25, M20, PG21, and PG29
- 16 Ground/earthing lug
- 17 Conduit entry Tapped 1.25" NPT; Options – M32, M25, M20, and PG21
- 18 Allowance for cover removal
- 19 Hole 0.22" (5.5) diameter x 0.43" (11) deep for self-tapping screw
- 20 Mounting face for attaching to valve flange or extended base
- 21 Control panel display window
- 22 Stem cover (when required) length to suit valve travel threaded 3.00" NPT or fitted pipe plug
- 23 Standard handwheel 24" (610) diameter. Optional size available 12" (305) diameter

Side-mounted Option: Side View



Side-mounted Option: Front View



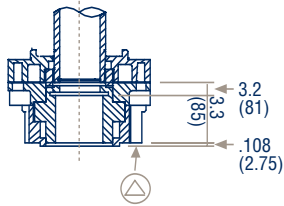
Note: Millimeter dimensions are in parentheses.

MX Unit 20 Base Details

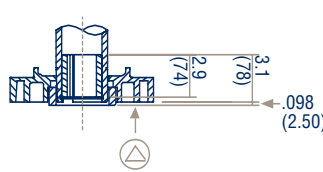
Dimensions in inches and millimeters.

Non-thrust (Torque Only) Bases

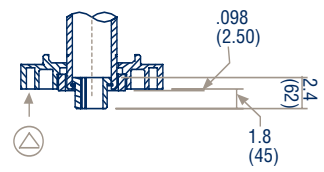
Type B1



Type B4

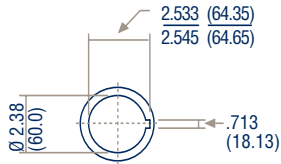


Type B4E (Extended Reach)

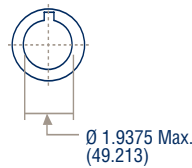


Stem Nut Bore Details

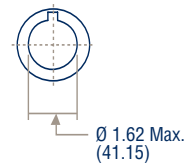
Type B1 (Fixed Bore)



Type B4 (Variable Bore)

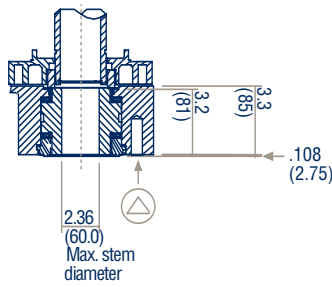


Type B4E (Variable Bore)

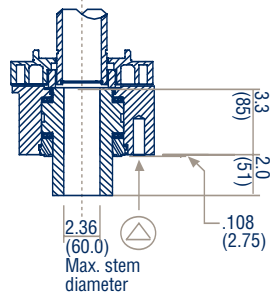


Thrust Bases

Type A1

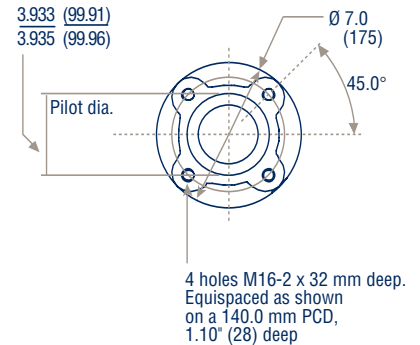


Type A1E (Extended Reach)



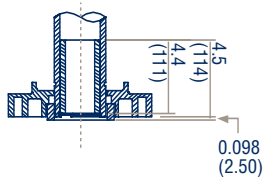
Base Details

F14

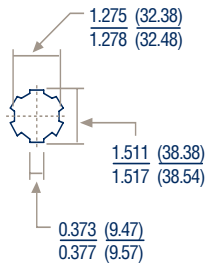


Splined Stem Nuts

Type BL



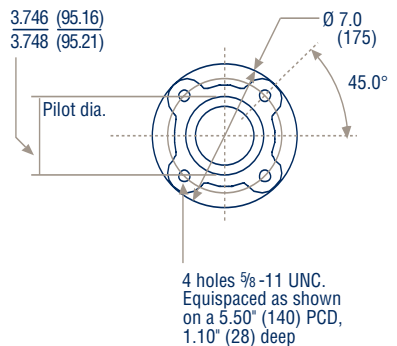
Type BL6 (6 Splines)



Type 36T

- Involute per ANSI B92.1
- Fillet root
- Side fit
- 30° PA
- 32/64 pitch

FA14

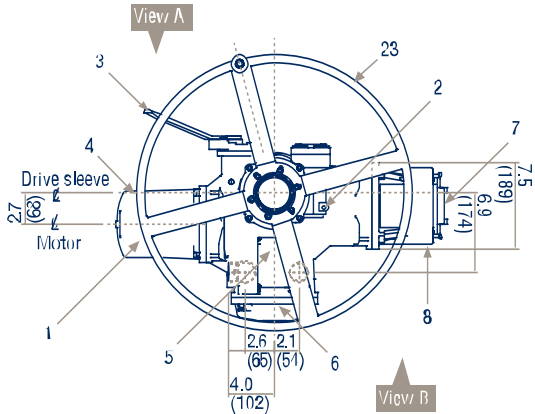


⚠ Note 1: Mounting face for attaching to valve flange.
 Note 2: Millimeter dimensions are in parentheses.

MX Unit 40 Dimension Data

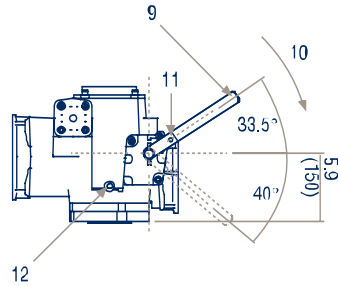
Dimensions in inches and millimeters.

Top View



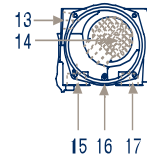
View A

Detail of declutch lever
Note: Handwheel removed for clarity.

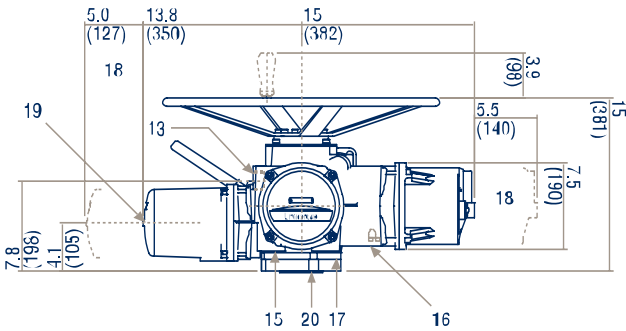


View B

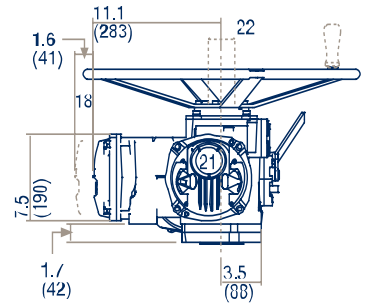
Conduit entries with covers removed



Side View



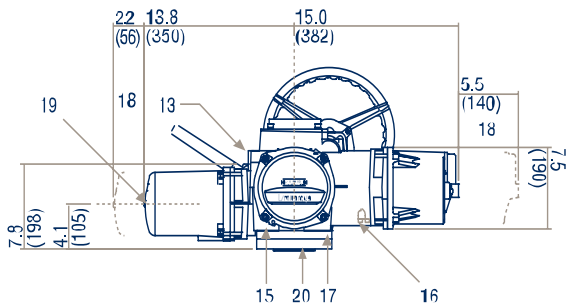
Front View



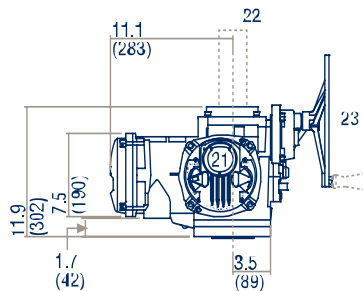
Dimension Key

- 1 Preferred mounting is with motor horizontal or up
- 2 Lubricant fill
- 3 Declutch lever is padlockable in motor operation
- 4 Motor
- 5 Serial text plate
- 6 Terminal compartment
- 7 Control panel
- 8 Controls compartment
- 9 Lever returns automatically to this position when released
- 10 To engage manual override
- 11 Hole 0.28" (7) diameter for padlock
- 12 Lubricant drain
- 13 Conduit entry – Tapped 1.25" NPT; Options – M32, M25, M20, and PG21
- 14 Customer terminals
- 15 Conduit entry – Tapped 1.5" NPT; Options – M40, M32, M25, M20, PG21, and PG29
- 16 Ground/earthing lug
- 17 Conduit entry – Tapped 1.25" NPT; Options – M32, M25, M20, and PG21
- 18 Allowance for cover removal
- 19 Hole 0.22" (5.5) diameter x 0.43" (11) deep for self-tapping screw
- 20 Mounting face for attaching to valve flange or extended base
- 21 Control panel display window
- 22 Stem cover (when required) length to suit valve travel threaded 3.00" NPT or fitted pipe plug
- 23 Standard hand/wheel 24" (610) diameter. Optional size available 12" (305) diameter

Side-mounted Option: Side View



Side-mounted Option: Front View



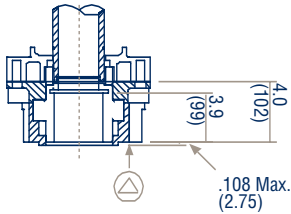
Note: Millimeter dimensions are in parentheses.

MX Unit 40 Base Details

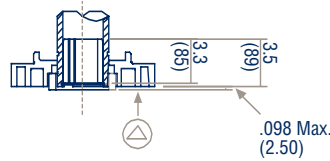
Dimensions in inches and millimeters.

Non-Thrust (Torque Only) Bases

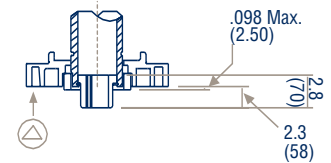
Type B1



Type B4

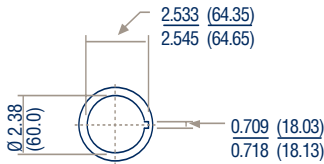


Type B4E (Extended Reach)



Stem Nut Bore Details

Type B1 (Fixed Bore)



Type B4 (Variable Bore)

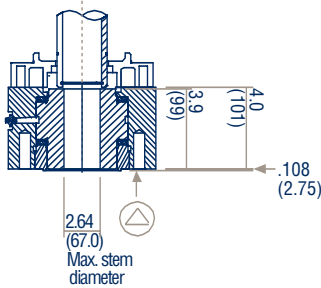


Type B4E (Variable Bore)

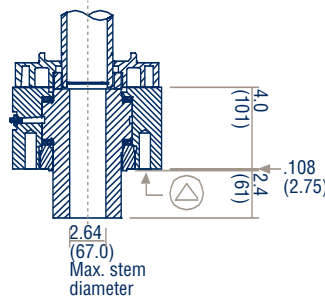


Thrust Bases

Type A1

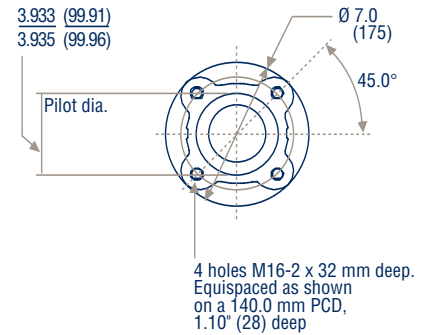


Type A1E (Extended Reach)



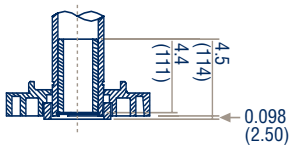
Base Details

F14

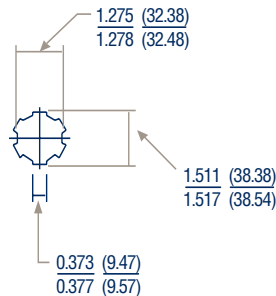


Splined Stem Nuts

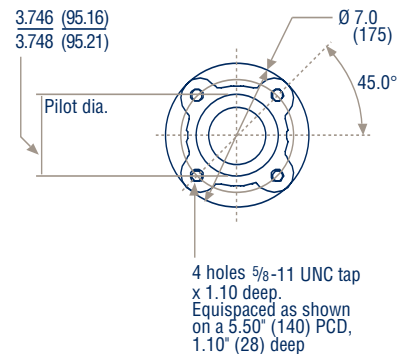
Type BL



Type BL6 (6 Splines)



FA14

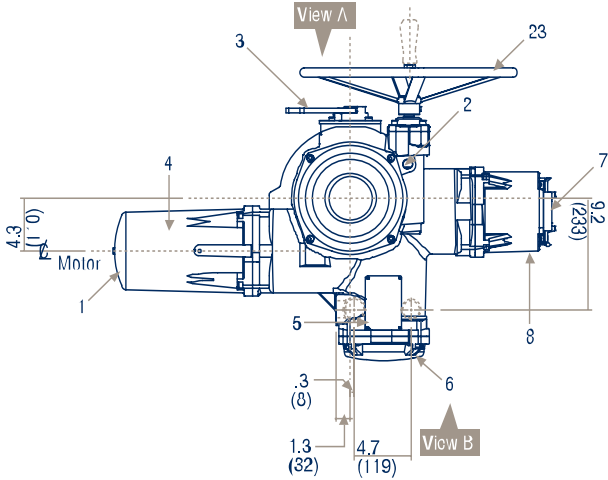


⚠ Note 1: Mounting face for attaching to valve flange.
 Note 2: Millimeter dimensions are in parentheses.

MX Unit 85 Dimension Data

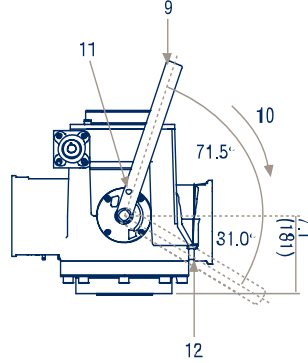
Dimensions in inches and millimeters.

Top View



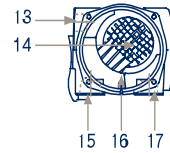
View A

Detail of declutch lever
Note: Handwheel removed for clarity

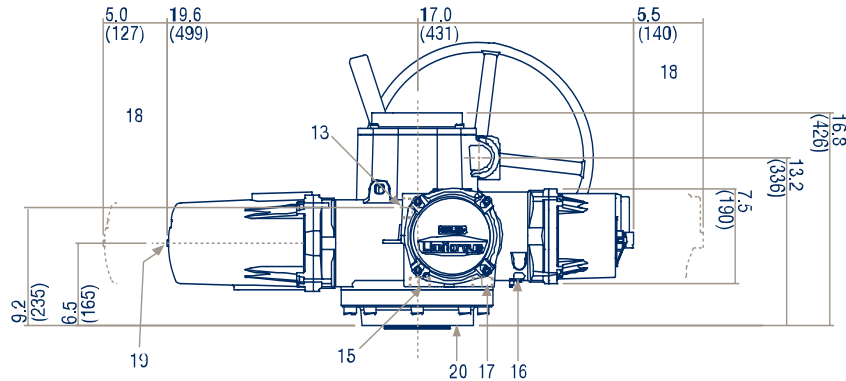


View B

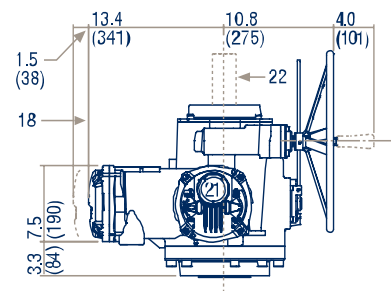
Conduit entries with covers removed



Side View



Front View



Note 1: Millimeter dimensions are in parentheses.
Note 2: See MX-140 (page 14) for SGA dimensions.

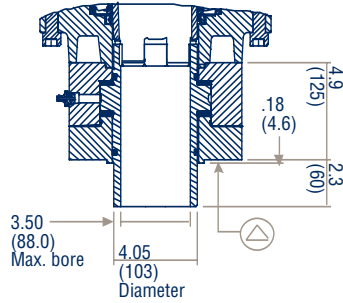
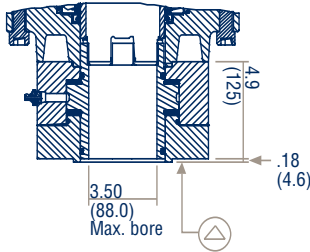
Dimension Key

- 1 Preferred mounting is with motor horizontal or up
- 2 Lubricant fill
- 3 Declutch lever is padlockable in motor operation
- 4 Motor
- 5 Serial text plate
- 6 Terminal compartment
- 7 Control panel
- 8 Controls compartment
- 9 Lever returns automatically to this position when released
- 10 To engage manual override
- 11 Hole 0.28" (7) diameter for padlock
- 12 Lubricant drain
- 13 Conduit entry – Tapped 1.25" NPT; Options – M32, M25, M20, and PG21
- 14 Customer terminals
- 15 Conduit entry – Tapped 1.5" NPT; Options – M40, M32, M25, M20, PG21, and PG29
- 16 Ground/earthing lug
- 17 Conduit entry – Tapped 1.25" NPT; Options – M32, M25, M20, and PG21
- 18 Allowance for cover removal
- 19 Hole 0.22" (5.5) diameter x 0.43" (11) deep for self-tapping screw
- 20 Mounting face for attaching to valve flange or extended base
- 21 Control panel display window
- 22 Stem cover (when required) – length to suit valve travel. Threaded 6" NPT or filled with pipe plug
- 23 Standard handwheel 18" (457) diameter

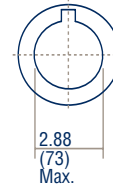
MX Unit 85 Base Details

Dimensions in inches and millimeters.

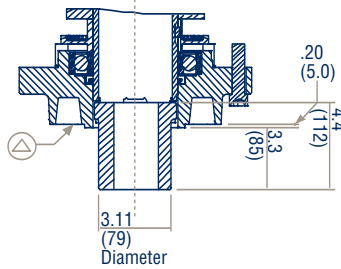
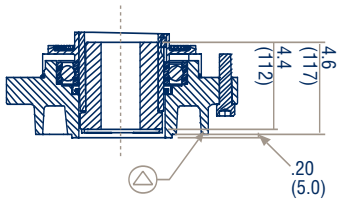
Thrust Bases
Type A1 | Type A1E (Extended Reach)



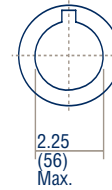
Stem Nut Bore Details
Type B4 (Variable Bore)



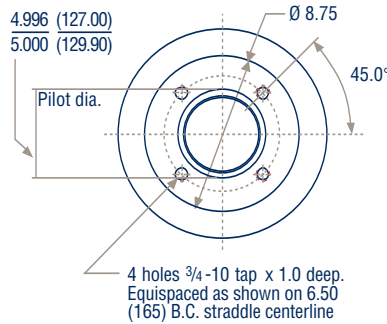
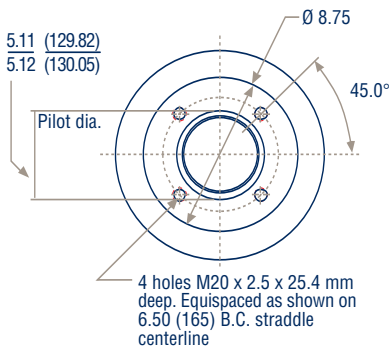
Non-thrust (Torque Only) Base
Type B4 | Type B4E (Extended Reach)



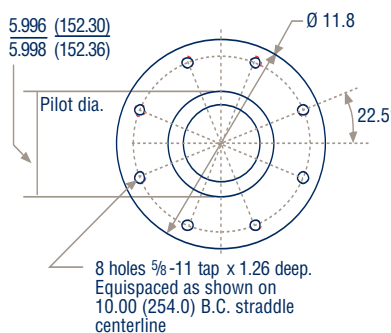
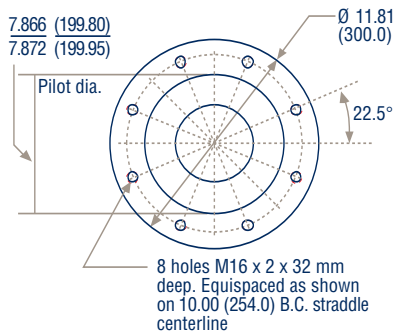
Stem Nut Bore Details
Type B4E (Variable Bore)



Base Details
F16 | FA16



Base Details
F25 | FA25

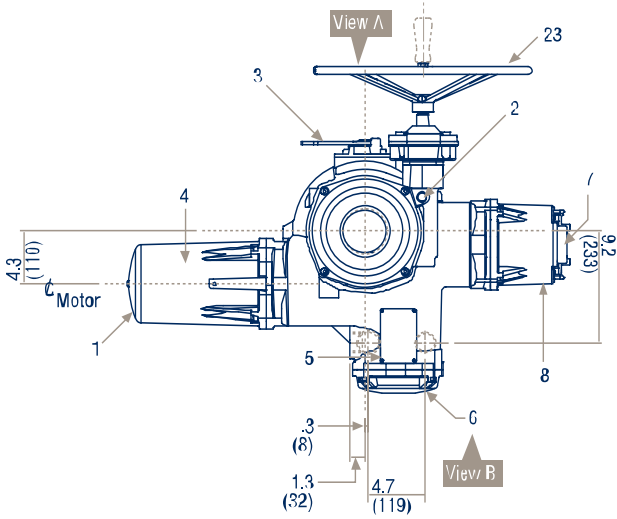


⚠ Note 1: Mounting face for attaching to valve flange.
Note 2: Millimeter dimensions are in parentheses.

MX Unit 140 Dimension Data

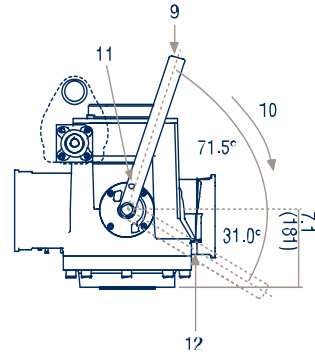
Dimensions in inches and millimeters.

Top View



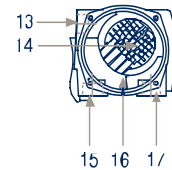
View A

Detail of declutch lever
Note: Handwheel removed for clarity

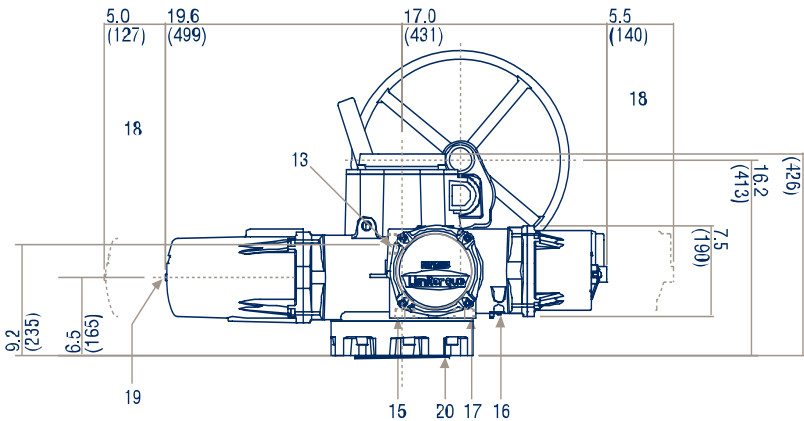


View B

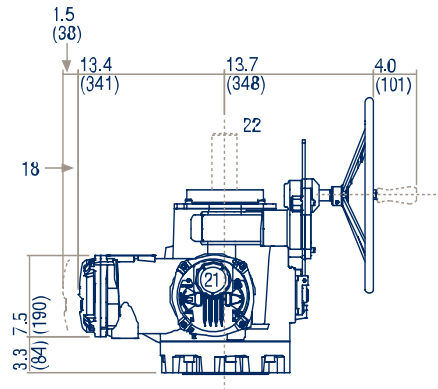
Conduit entries with covers removed



Side View



Side View



Note 1: Millimeter dimensions are in parentheses.
Note 2: SGA dimensions are identical for MX-85.

Dimension Key

- | | |
|--|--|
| <ul style="list-style-type: none"> 1 Preferred mounting is with motor horizontal or up 2 Lubricant fill 3 Declutch lever is padlockable in motor operation 4 Motor 5 Serial text plate 6 Terminal compartment 7 Control panel 8 Controls compartment 9 Lever returns automatically to this position when released 10 To engage manual override 11 Hole 0.28" (7) diameter for padlock 12 Lubricant drain 13 Conduit entry – Tapped 1.25" NPT; Options – M32, M25, M20, and PG21 | <ul style="list-style-type: none"> 14 Customer terminals 15 Conduit entry – Tapped 1.5" NPT; Options – M40, M32, M25, M20, PG21, and PG29 16 Ground/earthing lug 17 Conduit entry – Tapped 1.25" NPT; Options – M32, M25, M20, and PG21 18 Allowance for cover removal 19 Hole 0.22" (5.6) diameter x 0.13" (11) deep for self-tapping screw 20 Mounting face for attaching to valve flange or extended base 21 Control panel display window 22 Stem cover (when required) length to suit valve travel. Threaded 6" NPT or fitted with pipe plug. 23 Standard handwheel 18" (457) diameter |
|--|--|

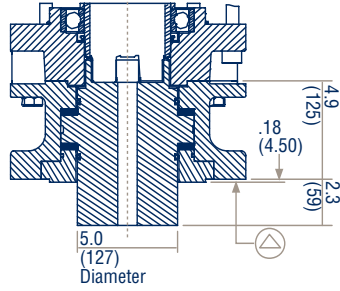
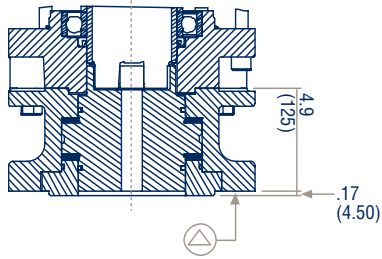
MX Unit 140 Base Details

Dimensions in inches and millimeters.

Thrust Bases

Type A1

Type A1E (Extended Reach)



Stem Nut Bore Details

Type B4 (Variable Bore)



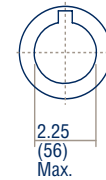
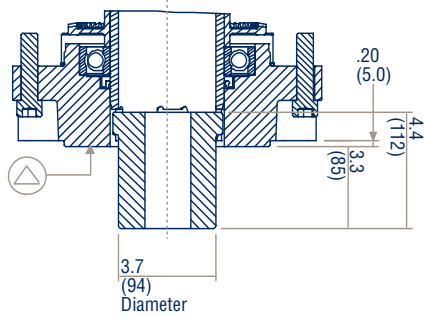
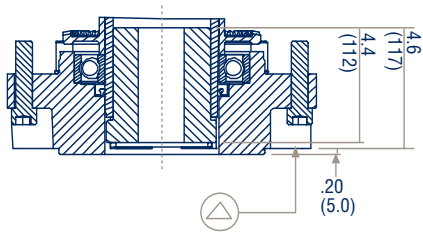
Non-thrust (Torque Only) Base

Type B4

Type B4E (Extended Reach)

Stem Nut Bore Details

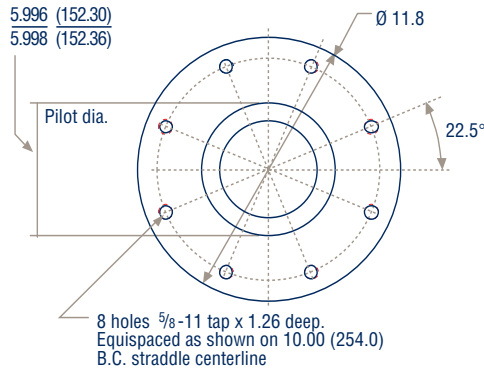
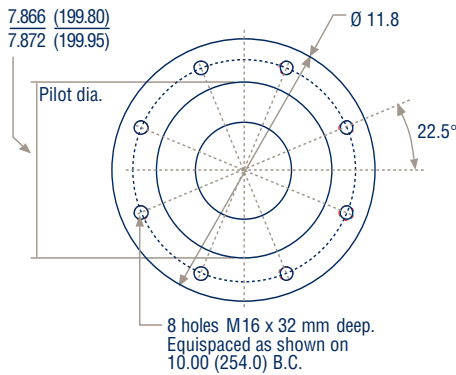
Type B4E (Variable Bore)



Base Details

F25

FA25



Note 1: Mounting face for attaching to valve flange.
 Note 2: Millimeter dimensions are in parentheses.

Limitorque
5114 Woodall Road, P.O. Box 11318
Lynchburg, VA 24506-1318
Phone (434) 528-4400, Fax (434) 845-9736
<http://www.limitorque.com>

Limitorque
Abex Road
Newbury
Berkshire, RG14 5EY
England
Phone 44-1-635-46999
Fax 44-1-635-36034

Limitorque Nippon Gear Co., Ltd.
Asahi-Seimei Bldg. 4th Floor
1-11-11 Kita-Saiwai, Nishi-Ku
Yokohama-Shi, (220-0004)
Japan
Phone 81-45-326-2065
Fax 81-45-320-5962

Limitorque India, Ltd.
302, Mansarovar
90 Nehru Place
New Delhi - 110019
India
Phone 91-11-6431-748
Fax 91-11-6432-749

Flowserve Australia Pty., Ltd.
14 Dalemore Drive
Scoresby, Victoria 3179
Australia
Phone 613-9729-2633
Fax 613-9729-2644

Limitorque Asia, Pte., Ltd.
12, Tuas Avenue 20
Singapore 638824
Phone 65-6868-4628
Fax 65-6862-4940



Flowserve Corporation has established industry leadership in the design and manufacture of its products. When properly selected, this Flowserve product is designed to perform its intended function safely during its useful life. However, the purchaser or user of Flowserve products should be aware that Flowserve products might be used in numerous applications under a wide variety of industrial service conditions. Although Flowserve can (and often does) provide general guidelines, it cannot provide specific data and warnings for all possible applications. The purchaser/user must therefore assume the ultimate responsibility for the proper sizing and selection, installation, operation, and maintenance of Flowserve products. The purchaser/user should read and understand the Installation and Maintenance (I & M) instructions included with the product, and train its employees and contractors in the safe use of Flowserve products in connection with the specific application.

While the information and specifications contained in this literature are believed to be accurate, they are supplied for informative purposes only and should not be considered certified or as a guarantee of satisfactory results by reliance thereon. Nothing contained herein is to be construed as a warranty or guarantee, express or implied, regarding any matter with respect to this product. Because Flowserve is continually improving and upgrading its product design, the specifications, dimensions and information contained herein are subject to change without notice. Should any question arise concerning these provisions, the purchaser/user should contact Flowserve Corporation at any one of its worldwide operations or offices.

For more information about Flowserve Corporation, contact www.flowserve.com or call USA 1-800-225-6989

FLOWSERVE CORPORATION
FLOW CONTROL DIVISION
Limitorque Actuation Systems
5114 Woodall Road
P.O. Box 11318
Lynchburg, VA 24506-1318
Phone: 434 528 4400
Facsimile: 434 845 9736
www.limitorque.com