



TECHNICAL SPECIFICATION

Bulletin	: AIE-ERV-015
Effective	: Sept. 12, 2002
Supersedes	:
Dated	:

ARCTIC INDIA ENGINEERING PVT. LTD.
 ARCTIC INDIA HOUSE, 20, RAJPUR ROAD, DELHI - 110054 (INDIA)
 PHONE : 91-11-23912800 FAX: 91-11-23915127
 E-MAIL: enquire@pahwa.com

ENERGY RECOVERY VENTILATOR ERV-1200/1700

ERV-1200/1700 CABINET-STYLE ENERGY RECOVERY VENTILATOR

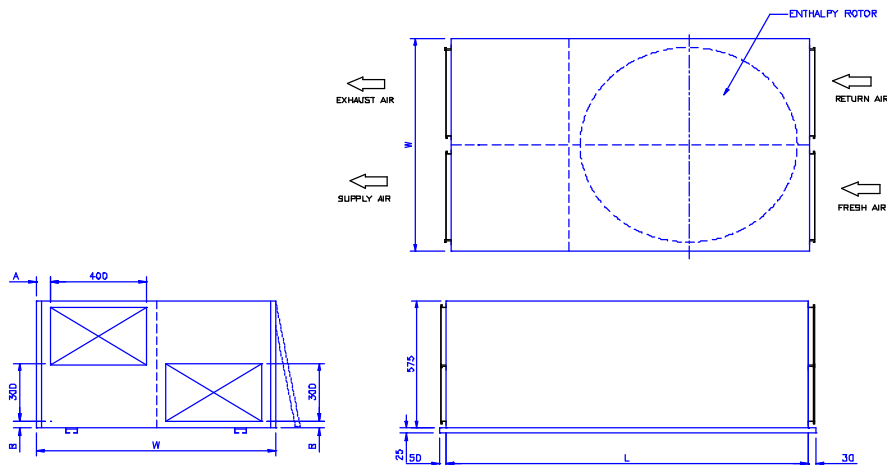
ALL ERV-1200/1700 UNIVERSAL MOUNT, CABINET-STYLE ENERGY RECOVERY VENTILATORS COME STANDARD WITH :

- CNC MANUFACTURED 18 GAUGE POWDER COATED CABINET WITH 12GAUGE FRAME.
- OFF WHITE LEATHER FINISH.
- MOLECULAR SIEVE COATED ALUMINIUM, "ECOFRESH". TOTAL ENERGY RECOVERY WHEEL.
- COMPACT FORWARD CURVED DUAL INLET BLOWERS.
- CASING INSULATED WITH 19mm CLOSED CELLS, HIGH DENSITY INSULATION TO PREVENT CONDENSATION OF MOISTURE ON EXTERIORS OR INTERIORS OF THE UNIT.
- LARGE PANEL OPENING FOR EASY ACCESS TO FILTERS, AND INSPECTION OF OTHER COMPONENTS.
- REMOTE START/STOP WITH 1.25 MTR.LONG CABLE.
- METALLIC FLANGES FOR DUCT CONNECTIONS.
- REMOVABLE, WASHABLE SYNTHETIC PRE FILTERS.
- PROVIDED WITH FACTORY SET PURGE
- FACTORY SET INBUILT PURGE.
- FEATHER TOUCH BRUSH SEALS MINIMIZE CROSS CONTAMINATION & ENSURE LONG LIFE.

SPECIFICATION SHEET FOR ERV-1200/1700

MODEL	SUPPLY AIR FLOW CMH	DUCT CONNECTION IN mm	EXHAUST AIR FLOW CMH	DUCT CONNECTION IN mm	SUPPLY BLOWER WATT	EXHAUST BLOWER WATT	BED DRIVE MOTOR WATT	NOISE LEVEL (dbA)	DIMENSIONS IN MM (EXCLUDING BASE FRAME)			APPROX. SHIPPING WT. IN KG.	AC POWER SOURCE	EFFICIENCY
									L	W	H			
ERV-1200	1200	400x300	1200	400x300	650	650	40	45*	1450	1050	560	160	230V/1Ph/50Hz	> 65
ERV-1700	1700	400x300	1700	400x300	650	650	40	45*	1630	1100	560	180	230V/1Ph/50Hz	> 65

***MEASURED AT 3 MTRS. DISTANCE (AT 90 DEGREES), WHEN UNIT IS DUCTED.**



OPTION AVAILABILITY

ECONOMISER	ON REQUEST
SENSIBLE RECOVERY	AVAILABLE
VARIABLE SPEED CONTROLLER	ON REQUEST
ALUMINIUM FILTERS	AVAILABLE
CO2 MONITOR	AVAILABLE
OUTLET DUCT GRILLS	AVAILABLE

UNIT MODEL	A	B
ERV-1200	80	36
ERV-1700	105	36

ALL DATA SUBJECT TO CHANGE WITHOUT NOTICE





ARCTIC INDIA ENGINEERING PVT. LTD.

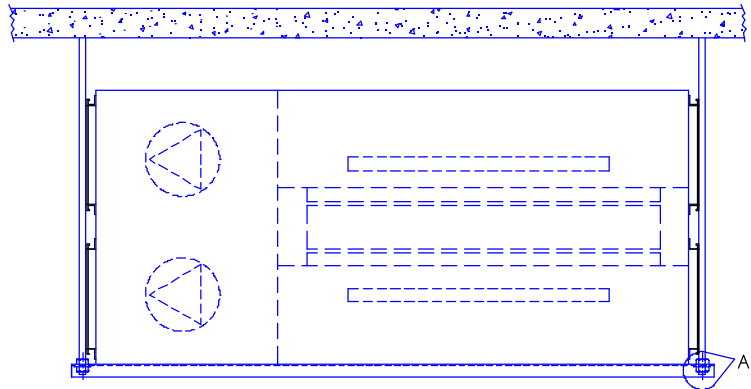
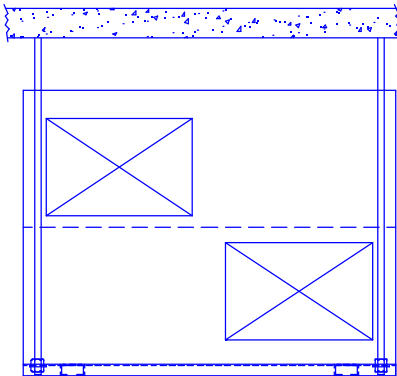
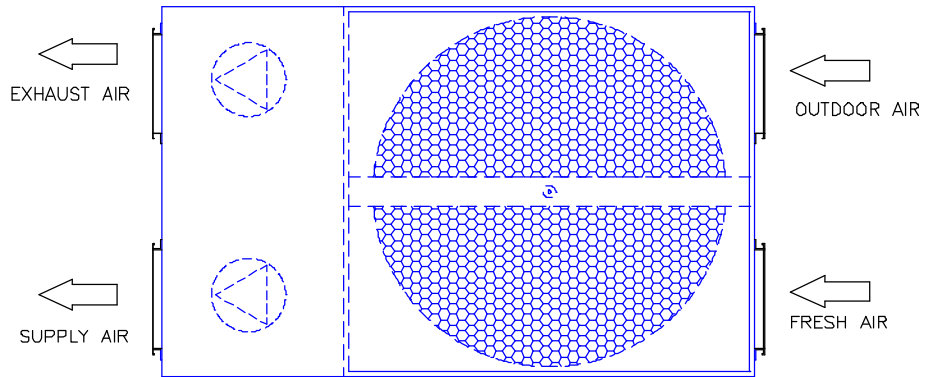
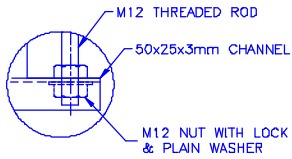
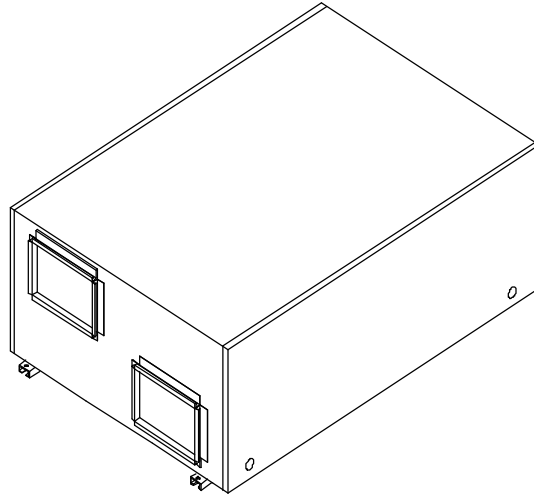
ARCTIC INDIA HOUSE, 20, RAJPUR ROAD, DELHI - 110054 (INDIA)

PHONE : 91-11-23912800 FAX: 91-11-23915127

E-MAIL: enquire@pahwa.com

TECHNICAL SPECIFICATION

UNIT MOUNTING DETAIL



ALL DATA SUBJECT TO CHANGE WITHOUT NOTICE

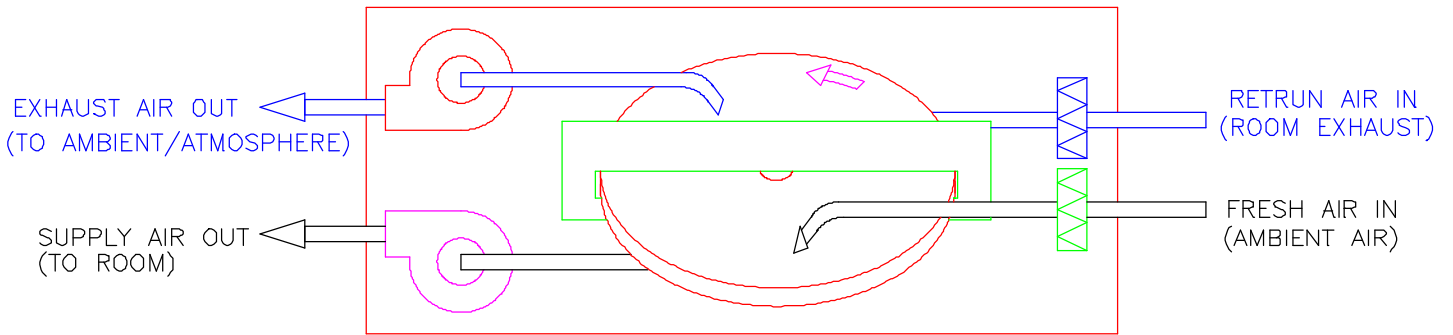




TECHNICAL SPECIFICATION

ARCTIC INDIA ENGINEERING PVT. LTD.
ARCTIC INDIA HOUSE, 20, RAJPUR ROAD, DELHI - 110054 (INDIA)
PHONE : 91-11-23912800 FAX: 91-11-23915127
E-MAIL: enquire@pahwa.com

SYSTEM FLOW DIAGRAM



ALL DATA SUBJECT TO CHANGE WITHOUT NOTICE

